

# Dell™ Inspiron™ 1370 Service Manual

[Before You Begin](#)

[Battery](#)

[Optical Drive](#)

[Memory Module\(s\)](#)

[Wireless Mini-Card\(s\)](#)

[Keyboard](#)

[Palm Rest](#)

[Internal Card With Bluetooth® Wireless Technology](#)

[Hard Drive](#)

[USB/Audio Board](#)

[System Board](#)

[Coin-Cell Battery](#)

[Power Board](#)

[Processor Fan](#)

[Thermal Cooling Assembly](#)

[Speakers](#)

[SIM Board](#)

[Display](#)

[Camera](#)

[Battery Latch Assemblies](#)

[Flashing the BIOS](#)

---

## Notes, Cautions, and Warnings



**NOTE:** A NOTE indicates important information that helps you make better use of your computer.



**CAUTION:** A CAUTION indicates either potential damage to hardware or loss of data and tells you how to avoid the problem.



**WARNING:** A WARNING indicates a potential for property damage, personal injury, or death.

---

Information in this document is subject to change without notice.  
© 2009 Dell Inc. All rights reserved.

Reproduction of these materials in any manner whatsoever without the written permission of Dell Inc. is strictly forbidden.

Trademarks used in this text: *Dell*, the *DELL* logo, and *Inspiron* are trademarks of Dell Inc.; *Bluetooth* is a registered trademark owned by Bluetooth SIG, Inc. and is used by Dell under license; *Microsoft*, *Windows*, and the *Windows* start button logo are either trademarks or registered trademarks of Microsoft Corporation in the United States and/or other countries.

Other trademarks and trade names may be used in this document to refer to either the entities claiming the marks and names or their products. Dell Inc. disclaims any proprietary interest in trademarks and trade names other than its own.

Regulatory Model: P06S series  
Regulatory Type: P06S001

November 2009 Rev. A00

## Battery

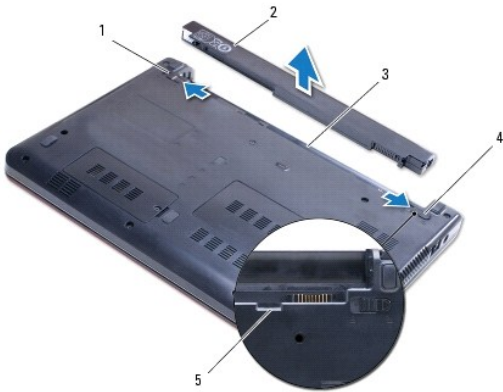
### Dell™ Inspiron™ 1370 Service Manual

- [Removing the Battery](#)
- [Replacing the Battery](#)

- WARNING:** Before working inside your computer, read the safety information that shipped with your computer. For additional safety best practices information, see the Regulatory Compliance Homepage at [www.dell.com/regulatory\\_compliance](http://www.dell.com/regulatory_compliance).
- CAUTION:** Only a certified service technician should perform repairs on your computer. Damage due to servicing that is not authorized by Dell™ is not covered by your warranty.
- CAUTION:** To avoid electrostatic discharge, ground yourself by using a wrist grounding strap or by periodically touching an unpainted metal surface.
- CAUTION:** To avoid damage to the computer, use only the battery designed for this particular Dell computer. Do not use batteries designed for other Dell computers.
- 

## Removing the Battery

1. Follow the procedures in [Before You Begin](#).
2. Turn the computer upside down on a clean, flat surface.
3. Slide the battery release latch to the unlock position.  
The battery release latch automatically shifts to the locked position when you remove the battery.
4. Slide the battery lock latch to the unlock position.
5. At the notch, lift the battery to remove it from the battery bay.



|   |                       |   |                    |
|---|-----------------------|---|--------------------|
| 1 | battery release latch | 2 | battery            |
| 3 | battery bay           | 4 | battery lock latch |
| 5 | notch                 |   |                    |

---

## Replacing the Battery

1. Follow the procedures in [Before You Begin](#).
  2. Place the battery in the battery bay.
  3. Push down on the battery to connect it to the computer.
  4. Slide the battery lock latch to the locked position.
-

[Back to Contents Page](#)

## Before You Begin

### Dell™ Inspiron™ 1370 Service Manual

- [Recommended Tools](#)
- [Turning Off Your Computer](#)
- [Before Working Inside Your Computer](#)

This manual provides procedures for removing and installing components in your computer. Unless otherwise noted, each procedure assumes that the following conditions exist:

- 1 You have performed the steps in [Turning Off Your Computer](#) and [Before Working Inside Your Computer](#).
- 1 You have read the safety information that shipped with your computer.
- 1 A component can be replaced or—if purchased separately—installed by performing the removal procedure in the reverse order.

---

## Recommended Tools


The procedures in this document may require the following tools:

- 1 small Phillips screwdriver
- 1 small flat-blade screwdriver
- 1 plastic scribe
- 1 BIOS executable update program available at [support.dell.com](http://support.dell.com)

---

## Turning Off Your Computer

 **CAUTION:** To avoid losing data, save and close all open files and exit all open programs before you turn off your computer.

1. Save and close all open files and exit all open programs.
2. Click **Start** , then click **Shut Down**.


The computer turns off after the operating system shutdown process finishes.


3. Ensure that the computer is turned off. If your computer did not automatically turn off when you shut down the operating system, press and hold the power button until the computer turns off.


---


## Before Working Inside Your Computer


Use the following safety guidelines to help protect your computer from potential damage and to help to ensure your own personal safety.

 **WARNING:** Before working inside your computer, read the safety information that shipped with your computer. For additional safety best practices information, see the Regulatory Compliance Homepage at [www.dell.com/regulatory\\_compliance](http://www.dell.com/regulatory_compliance).

 **CAUTION:** Only a certified service technician should perform repairs on your computer. Damage due to servicing that is not authorized by Dell is not covered by your warranty.

 **CAUTION:** Handle components and cards with care. Do not touch the components or contacts on a card. Hold a card by its edges or by its metal mounting bracket. Hold a component by its edges, not by its pins.


 **CAUTION:** When you disconnect a cable, pull on its connector or on its pull-tab, not on the cable itself. Some cables have connectors with locking tabs; if you are disconnecting this type of cable, press in on the locking tabs before you disconnect the cable. As you pull connectors apart, keep them evenly aligned to avoid bending any connector pins. Also, before you connect a cable, ensure that both connectors are correctly oriented and aligned.

 **CAUTION:** To avoid damaging the computer, perform the following steps before you begin working inside the computer.

1. Ensure that the work surface is flat and clean to prevent the computer cover from being scratched.
2. Turn off your computer (see [Turning Off Your Computer](#)) and all attached devices.

 **CAUTION:** To disconnect a network cable, first unplug the cable from your computer and then unplug the cable from the network device.

3. Disconnect all telephone or network cables from the computer.
4. Eject the card from the 7-in-1 memory card reader, if applicable.
5. Disconnect your computer and all attached devices from their electrical outlets.
6. Disconnect all attached devices from your computer.

 **CAUTION:** To help prevent damage to the system board, remove the main battery (see [Removing the Battery](#)) before working inside the computer.

7. Remove the battery (see [Removing the Battery](#)).
8. Turn the computer topside up, open the computer, and press the power button to ground the system board.


---

[Back to Contents Page](#)

## Flashing the BIOS

### Dell™ Inspiron™ 1370 Service Manual

1. Turn on the computer.
2. Go to [support.dell.com](http://support.dell.com).
3. Click **Drivers & Downloads**→ **Select Model**.
4. Locate the BIOS update file for your computer:


 **NOTE:** The Service Tag for your computer is located at the bottom of the computer.

If you have your computer's Service Tag:

- a. Click **Enter a Service Tag**.
- b. Enter your computer's Service Tag in the **Enter a service tag:** field, click **Go**, and proceed to [step 5](#).

If you do not have your computer's Service Tag:

- a. Select the type of product in the **Select Your Product Family** list.
- b. Select the product brand in the **Select Your Product Line** list.
- c. Select the product model number in the **Select Your Product Model** list.

 **NOTE:** If you have selected a different model and want to start over again, click **Start Over** on the top right of the menu.

- d. Click **Confirm**.
5. A list of results appear on the screen. Click **BIOS**.
6. Click **Download Now** to download the latest BIOS file.  
The **File Download** window appears.
7. Click **Save** to save the file on your desktop. The file downloads to your desktop.
8. Click **Close** if the **Download Complete** window appears.  
The file icon appears on your desktop and is titled the same as the downloaded BIOS update file.
9. Double-click the file icon on the desktop and follow the instructions on the screen.

## Internal Card With Bluetooth® Wireless Technology

### Dell™ Inspiron™ 1370 Service Manual

- [Removing the Bluetooth Card](#)
- [Replacing the Bluetooth Card](#)

**WARNING:** Before working inside your computer, read the safety information that shipped with your computer. For additional safety best practices information, see the Regulatory Compliance Homepage at [www.dell.com/regulatory\\_compliance](http://www.dell.com/regulatory_compliance).

**CAUTION:** Only a certified service technician should perform repairs on your computer. Damage due to servicing that is not authorized by Dell™ is not covered by your warranty.

**CAUTION:** To avoid electrostatic discharge, ground yourself by using a wrist grounding strap or by periodically touching an unpainted metal surface.

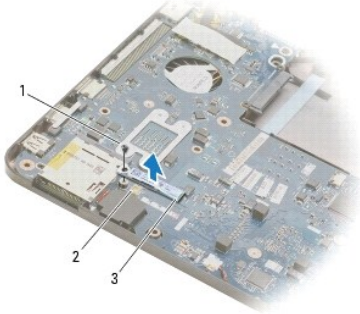
**CAUTION:** To help prevent damage to the system board, remove the main battery (see [Removing the Battery](#)) before working inside the computer.

If you ordered a card with Bluetooth wireless technology with your computer, it is already installed.

---

## Removing the Bluetooth Card

1. Follow the procedures in [Before You Begin](#).
2. Remove the battery (see [Removing the Battery](#)).
3. Remove the keyboard (see [Removing the Keyboard](#)).
4. Turn the computer over and remove the Mini-Card cover (follow the instructions from [step 3](#) to [step 4](#) in [Removing the Mini-Card\(s\)](#)).
5. Remove the palm rest (see [Removing the Palm Rest](#)).
6. Remove the screw that secures the Bluetooth card to the system board.
7. Lift the Bluetooth card to disconnect it from the system board connector.




|   |                |   |                        |
|---|----------------|---|------------------------|
| 1 | screw          | 2 | system board connector |
| 3 | Bluetooth card |   |                        |

---

## Replacing the Bluetooth Card

1. Follow the procedures in [Before You Begin](#).
2. Align the connector on the Bluetooth card with the connector on the system board, and press down to connect the Bluetooth card to the system board.
3. Replace the screw that secures the Bluetooth card to the system board.

4. Replace the palm rest (see [Replacing the Palm Rest](#)).
5. Replace the Mini-Card cover (follow the instructions from [step 7](#) to [step 8](#) in [Replacing the Mini-Card\(s\)](#)).
6. Replace the keyboard (see [Replacing the Keyboard](#)).
7. Replace the battery (see [Replacing the Battery](#)).

 **CAUTION:** Before turning on the computer, replace all screws and ensure that no stray screws remain inside the computer. Failure to do so may result in damage to the computer.

---

[Back to Contents Page](#)



## Camera

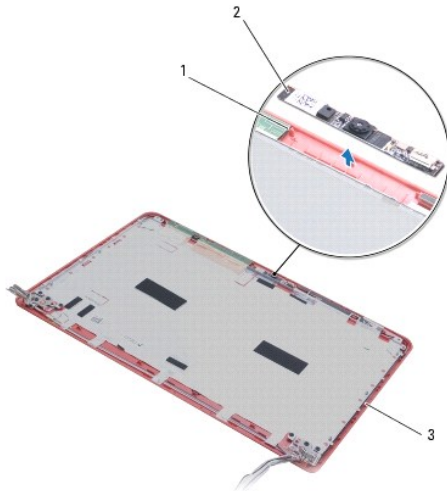
### Dell™ Inspiron™ 1370 Service Manual

- [Removing the Camera](#)
- [Replacing the Camera](#)

- WARNING:** Before working inside your computer, read the safety information that shipped with your computer. For additional safety best practices information, see the Regulatory Compliance Homepage at [www.dell.com/regulatory\\_compliance](http://www.dell.com/regulatory_compliance).
- CAUTION:** Only a certified service technician should perform repairs on your computer. Damage due to servicing that is not authorized by Dell™ is not covered by your warranty.
- CAUTION:** To avoid electrostatic discharge, ground yourself by using a wrist grounding strap or by periodically touching an unpainted metal surface (such as a connector on the back of the computer).
- CAUTION:** To help prevent damage to the system board, remove the main battery (see [Removing the Battery](#)) before working inside the computer.
- 

## Removing the Camera

1. Follow the procedures in [Before You Begin](#).
2. Remove the battery (see [Removing the Battery](#)).
3. Follow the instructions from [step 3](#) to [step 15](#) in [Removing the System Board](#).
4. Remove the display assembly (see [Removing the Display Assembly](#)).
5. Remove the display hinge covers (see [Removing the Display Hinge Covers](#)).
6. Remove the display bezel (see [Removing the Display Bezel](#)).
7. Remove the display panel (see [Removing the Display Panel](#)).
8. Lift the camera module off the display cover.




|   |                     |   |               |
|---|---------------------|---|---------------|
| 1 | alignment posts (2) | 2 | camera module |
| 3 | display cover       |   |               |

---

## Replacing the Camera

1. Follow the procedures in [Before You Begin](#).
2. Place the camera module on the display cover using the alignment posts.
3. Press down on the camera module to secure it to the display cover.
4. Replace the display panel (see [Replacing the Display Panel](#)).
5. Replace the display bezel (see [Replacing the Display Bezel](#)).
6. Replace the display hinge covers (see [Replacing the Display Hinge Covers](#)).
7. Replace the display assembly (see [Replacing the Display Assembly](#)).
8. Follow the instructions from [step 5](#) to [step 21](#) in [Replacing the System Board](#).
9. Replace the battery (see [Replacing the Battery](#)).

 **CAUTION:** Before turning on the computer, replace all screws and ensure that no stray screws remain inside the computer. Failure to do so may result in damage to the computer.

---

[Back to Contents Page](#)

## Coin-Cell Battery

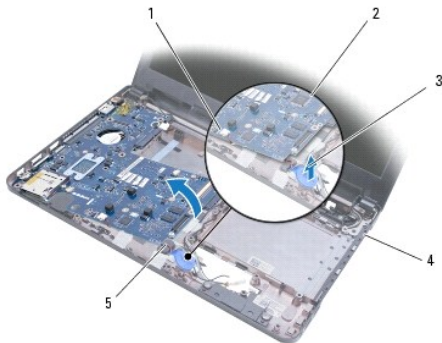
### Dell™ Inspiron™ 1370 Service Manual

- [Removing the Coin-Cell Battery](#)
- [Replacing the Coin-Cell Battery](#)

- ⚠ WARNING:** Before working inside your computer, read the safety information that shipped with your computer. For additional safety best practices information, see the Regulatory Compliance Homepage at [www.dell.com/regulatory\\_compliance](http://www.dell.com/regulatory_compliance).
- ⚠ CAUTION:** Only a certified service technician should perform repairs on your computer. Damage due to servicing that is not authorized by Dell™ is not covered by your warranty.
- ⚠ CAUTION:** To avoid electrostatic discharge, ground yourself by using a wrist grounding strap or by periodically touching an unpainted metal surface.
- ⚠ CAUTION:** To help prevent damage to the system board, remove the main battery (see [Removing the Battery](#)) before working inside the computer.
- 

## Removing the Coin-Cell Battery

1. Follow the procedures in [Before You Begin](#).
2. Remove the battery (see [Removing the Battery](#)).
3. Follow the instructions from [step 3](#) to [step 13](#) in [Removing the System Board](#).
4. Lift the system board up slightly to remove the coin-cell battery cable from the routing guide.
5. Lift the coin-cell battery to remove it from the computer base.



|   |                         |   |               |
|---|-------------------------|---|---------------|
| 1 | system board connector  | 2 | system board  |
| 3 | coin-cell battery       | 4 | computer base |
| 5 | coin-cell battery cable |   |               |

---

## Replacing the Coin-Cell Battery

1. Follow the procedures in [Before You Begin](#).
2. With the adhesive side of the coin-cell battery facing down, press the coin-cell battery into place on the computer base.
3. Follow the instructions from [step 5](#) to [step 21](#) in [Replacing the System Board](#).
4. Replace the battery (see [Replacing the Battery](#)).

- ⚠ CAUTION:** Before turning on the computer, replace all screws and ensure that no stray screws remain inside the computer. Failure to do so may result in damage to the computer.
-

[Back to Contents Page](#)

## Thermal Cooling Assembly

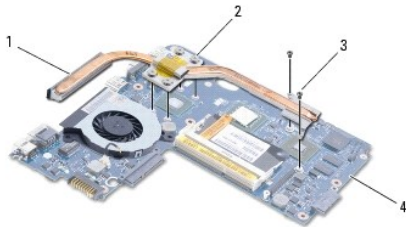
### Dell™ Inspiron™ 1370 Service Manual

- [Removing the Thermal Cooling Assembly](#)
- [Replacing the Thermal Cooling Assembly](#)

- WARNING:** Before working inside your computer, read the safety information that shipped with your computer. For additional safety best practices information, see the Regulatory Compliance Homepage at [www.dell.com/regulatory\\_compliance](http://www.dell.com/regulatory_compliance).
- WARNING:** If you remove the thermal cooling assembly from the computer when the heat sink is hot, do not touch the metal housing of the thermal cooling assembly.
- CAUTION:** Only a certified service technician should perform repairs on your computer. Damage due to servicing that is not authorized by Dell™ is not covered by your warranty.
- CAUTION:** To avoid electrostatic discharge, ground yourself by using a wrist grounding strap or by periodically touching an unpainted metal surface (such as the back panel) on the computer.
- CAUTION:** To help prevent damage to the system board, remove the main battery (see [Removing the Battery](#)) before working inside the computer.
- 

## Removing the Thermal Cooling Assembly

1. Follow the procedures in [Before You Begin](#).
2. Remove the battery (see [Removing the Battery](#)).
3. Follow the instructions from [step 3](#) to [step 15](#) in [Removing the System Board](#).
4. Remove the power board (see [Removing the Power Board](#)).
5. Loosen the four captive screws and remove the two screws on the thermal cooling assembly.
6. Remove the thermal cooling assembly from the system board.



|   |                          |   |                    |
|---|--------------------------|---|--------------------|
| 1 | thermal cooling assembly | 2 | captive screws (4) |
| 3 | screws (2)               | 4 | system board       |


---

## Replacing the Thermal Cooling Assembly

- NOTE:** Use the thermal pad provided in the kit to ensure that thermal conductivity is achieved.
- NOTE:** This procedure assumes that you have already removed the thermal cooling assembly and are ready to replace it.

1. Follow the procedures in [Before You Begin](#).
2. Align the four captive screws on the thermal cooling assembly with the screw holes on the system board and tighten the screws.
3. Replace the other two screws that secure the thermal cooling assembly to the system board.
4. Replace the power board (see [Replacing the Power Board](#)).
5. Follow the instructions from [step 5](#) to [step 21](#) in [Replacing the System Board](#).

6. Replace the battery (see [Replacing the Battery](#)).

 **CAUTION:** Before turning on the computer, replace all screws and ensure that no stray screws remain inside the computer. Failure to do so may result in damage to the computer.

---

[Back to Contents Page](#)

[Back to Contents Page](#)

## Display

### Dell™ Inspiron™ 1370 Service Manual

- [Display Assembly](#)
- [Display Hinge Covers](#)
- [Display Bezel](#)
- [Display Hinges](#)
- [Display Panel](#)

- ⚠ WARNING:** Before working inside your computer, read the safety information that shipped with your computer. For additional safety best practices information, see the Regulatory Compliance Homepage at [www.dell.com/regulatory\\_compliance](http://www.dell.com/regulatory_compliance).
- ⚠ CAUTION:** Only a certified service technician should perform repairs on your computer. Damage due to servicing that is not authorized by Dell™ is not covered by your warranty.
- ⚠ CAUTION:** To avoid electrostatic discharge, ground yourself by using a wrist grounding strap or by periodically touching an unpainted metal surface.
- ⚠ CAUTION:** To help prevent damage to the system board, remove the main battery (see [Removing the Battery](#)) before working inside the computer.
- 

## Display Assembly

### Removing the Display Assembly

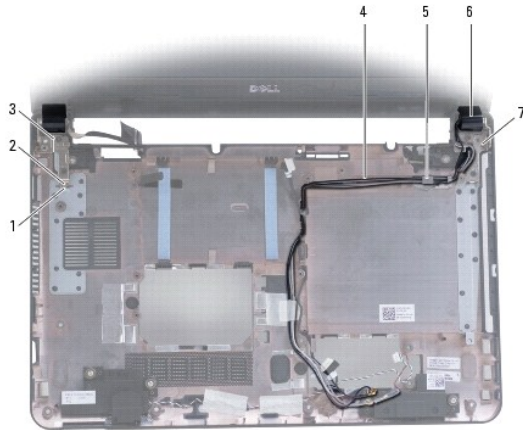
1. Follow the procedures in [Before You Begin](#).
2. Remove the battery (see [Removing the Battery](#)).
3. Follow the instructions from [step 3](#) to [step 15](#) in [Removing the System Board](#).
4. Remove the SIM board (see [Removing the SIM Board](#)).
5. Make a note of the Mini-Card antenna cable routing and carefully dislodge the antenna cables from the routing guides on the computer base. Pull the cables away so that they are clear of the computer base.
6. Remove the four screws that secure the display assembly to the computer base.
7. Slide the hinges out of the slots in the computer base.
8. Lift the display assembly off the computer base.



|   |                          |   |                    |
|---|--------------------------|---|--------------------|
| 1 | display assembly         | 2 | screws (4)         |
| 3 | Mini-Card antenna cables | 4 | display hinges (2) |

## Replacing the Display Assembly

1. Follow the procedures in [Before You Begin](#).
2. Slide the tabs on the display hinges into the slots in the computer base.
3. Align the display assembly with the computer base using the alignment posts on the computer base and set the display assembly in place. Ensure the display cable and Mini-Card antenna cables route correctly through the display hinge covers.
4. Replace the four screws that secure the display assembly to the computer base.
5. Route the Mini-Card antenna cables through the routing guides on the computer base.



|   |                            |   |                            |
|---|----------------------------|---|----------------------------|
| 1 | slots on computer base (2) | 2 | tabs on display hinges (2) |
| 3 | display hinges (2)         | 4 | Mini-Card antenna cables   |
| 5 | routing guides             | 6 | display hinge covers (2)   |
| 7 | alignment posts (3)        |   |                            |

6. Replace the SIM board (see [Replacing the SIM Board](#)).
7. Follow the instructions from [step 5](#) to [step 21](#) in [Replacing the System Board](#).
8. Replace the battery (see [Replacing the Battery](#)).

**CAUTION:** Before turning on the computer, replace all screws and ensure that no stray screws remain inside the computer. Failure to do so may result in damage to the computer.

## Display Hinge Covers

### Removing the Display Hinge Covers

**CAUTION:** The display hinge covers are extremely fragile. Be careful when removing the display hinge covers to prevent damaging them.

1. Follow the procedures in [Before You Begin](#).
2. Follow the instructions from [step 3](#) to [step 15](#) in [Removing the System Board](#).
3. Remove the display assembly (see [Removing the Display Assembly](#)).
4. Press in on the display hinge covers to release them from the display assembly.





|   |                  |   |                  |
|---|------------------|---|------------------|
| 1 | display assembly | 2 | hinge covers (2) |
|---|------------------|---|------------------|

## Replacing the Display Hinge Covers

1. Follow the procedures in [Before You Begin](#).
2. Place the hinge covers on the display hinges, then snap the hinge covers into place.
3. Replace the display assembly (see [Replacing the Display Assembly](#)).
4. Follow the instructions from [step 5](#) to [step 21](#) in [Replacing the System Board](#).
5. Replace the battery (see [Replacing the Battery](#)).

**CAUTION:** Before turning on the computer, replace all screws and ensure that no stray screws remain inside the computer. Failure to do so may result in damage to the computer.

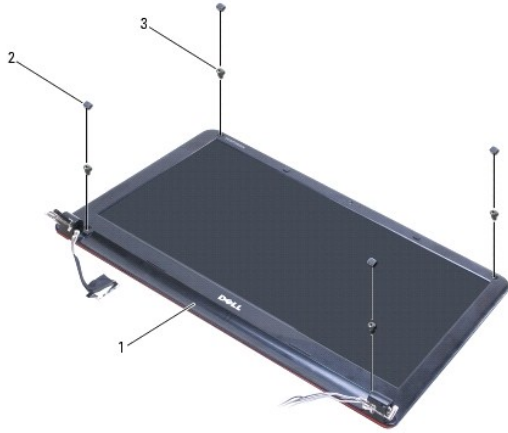
---

## Display Bezel

### Removing the Display Bezel

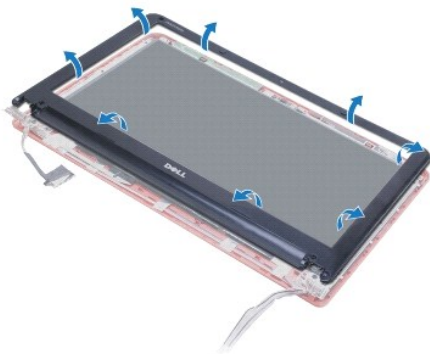
**CAUTION:** The display bezel is extremely fragile. Be careful when removing it to prevent damaging the bezel.

1. Follow the procedures in [Before You Begin](#).
2. Follow the instructions from [step 3](#) to [step 15](#) in [Removing the System Board](#).
3. Remove the display assembly (see [Removing the Display Assembly](#)).
4. Remove the display hinge covers (see [Removing the Display Hinge Covers](#)).
5. Remove the four rubber pads that cover the display bezel screws.
6. Remove the four screws from the display bezel.



|   |               |   |                 |
|---|---------------|---|-----------------|
| 1 | display bezel | 2 | rubber pads (4) |
| 3 | screws (4)    |   |                 |

7. Using your fingertips, carefully pry up the inside edge of the display bezel.
8. Remove the display bezel.



## Replacing the Display Bezel

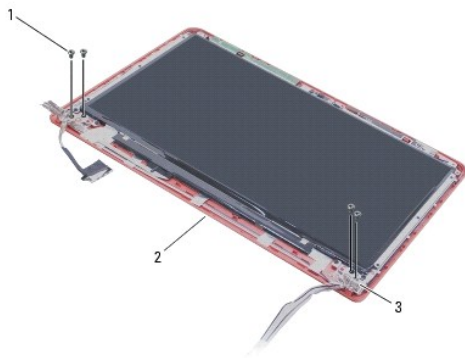
1. Follow the procedures in [Before You Begin](#).
2. Align the display bezel with the display panel, and snap the display bezel into place. Ensure the display and Mini-Card antenna cables route through the hinge portion of the bezel.
3. Replace the display hinge covers (see [Replacing the Display Hinge Covers](#)).
4. Replace the four screws that secure the display bezel to the display assembly.
5. Replace the four rubber pads that cover the display bezel screws.
6. Replace the display assembly (see [Replacing the Display Assembly](#)).
7. Follow the instructions from [step 5](#) to [step 21](#) in [Replacing the System Board](#).
8. Replace the battery (see [Replacing the Battery](#)).

**CAUTION:** Before turning on the computer, replace all screws and ensure that no stray screws remain inside the computer. Failure to do so may result in damage to the computer.

## Display Hinges

## Removing the Display Hinges

1. Follow the procedures in [Before You Begin](#).
2. Follow the instructions from [step 3](#) to [step 15](#) in [Removing the System Board](#).
3. Remove the display assembly (see [Removing the Display Assembly](#)).
4. Remove the display hinge covers (see [Removing the Display Hinge Covers](#)).
5. Remove the display bezel (see [Removing the Display Bezel](#)).
6. Remove the four screws that secure the display hinges to the display cover, and remove the hinges.



|   |                    |   |               |
|---|--------------------|---|---------------|
| 1 | screws (4)         | 2 | display cover |
| 3 | display hinges (2) |   |               |

## Replacing the Display Hinges

1. Follow the procedures in [Before You Begin](#).
2. Replace the four screws that secure the display hinges to the display cover.
3. Replace the display bezel (see [Replacing the Display Bezel](#)).
4. Replace the display hinge covers (see [Replacing the Display Hinge Covers](#)).
5. Replace the display assembly (see [Replacing the Display Assembly](#)).
6. Follow the instructions from [step 5](#) to [step 21](#) in [Replacing the System Board](#).
7. Replace the battery (see [Replacing the Battery](#)).

**CAUTION:** Before turning on the computer, replace all screws and ensure that no stray screws remain inside the computer. Failure to do so may result in damage to the computer.

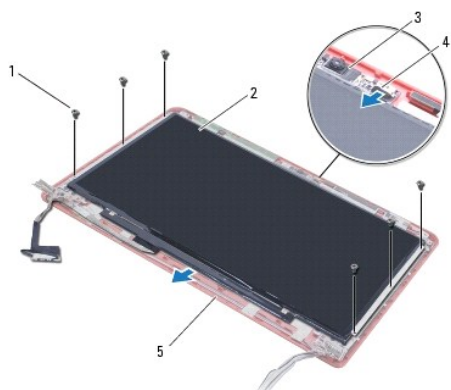
---

## Display Panel

### Removing the Display Panel

1. Follow the procedures in [Before You Begin](#).
2. Follow the instructions from [step 3](#) to [step 15](#) in [Removing the System Board](#).

3. Remove the display assembly (see [Removing the Display Assembly](#)).
4. Remove the display hinge covers (see [Removing the Display Hinge Covers](#)).
5. Remove the display bezel (see [Removing the Display Bezel](#)).
6. Remove the display hinges (see [Removing the Display Hinges](#)).
7. Remove the six screws that secure the display panel to the display cover.
8. Move the display panel down from the display cover enough to allow access to the camera cable.
9. Disconnect the camera cable from the camera module.
10. Remove the display panel from the display cover.



|   |               |   |               |
|---|---------------|---|---------------|
| 1 | screws (6)    | 2 | display panel |
| 3 | camera module | 4 | camera cable  |
| 5 | display cover |   |               |

## Replacing the Display Panel

1. Follow the procedures in [Before You Begin](#).
2. Connect the camera cable to the connector on the camera module.
3. Align the display panel with the display cover using the alignment posts on the display cover.
4. Replace the six screws that secure the display panel to the display cover.
5. Replace the display hinges (see [Replacing the Display Hinges](#)).
6. Replace the display bezel (see [Replacing the Display Bezel](#)).
7. Replace the display hinge covers (see [Replacing the Display Hinge Covers](#)).
8. Replace the display assembly (see [Replacing the Display Assembly](#)).
9. Follow the instructions from [step 5](#) to [step 21](#) in [Replacing the System Board](#).
10. Replace the battery (see [Replacing the Battery](#)).

**CAUTION:** Before turning on the computer, replace all screws and ensure that no stray screws remain inside the computer. Failure to do so may result in damage to the computer.



## Processor Fan

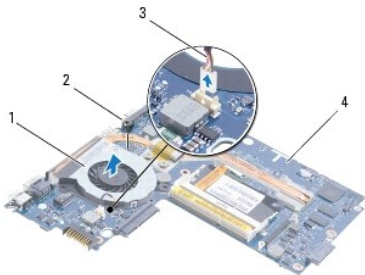
### Dell™ Inspiron™ 1370 Service Manual

- [Removing the Processor Fan](#)
- [Replacing the Processor Fan](#)

- WARNING:** Before working inside your computer, read the safety information that shipped with your computer. For additional safety best practices information, see the Regulatory Compliance Homepage at [www.dell.com/regulatory\\_compliance](http://www.dell.com/regulatory_compliance).
- CAUTION:** Only a certified service technician should perform repairs on your computer. Damage due to servicing that is not authorized by Dell™ is not covered by your warranty.
- CAUTION:** To avoid electrostatic discharge, ground yourself by using a wrist grounding strap or by periodically touching an unpainted metal surface.
- CAUTION:** To help prevent damage to the system board, remove the main battery (see [Removing the Battery](#)) before working inside the computer.
- 

## Removing the Processor Fan

1. Follow the procedures in [Before You Begin](#).
2. Remove the battery (see [Removing the Battery](#)).
3. Follow the instructions from [step 3](#) to [step 15](#) in [Removing the System Board](#).
4. Disconnect the processor fan cable from the system board connector.
5. Remove the screw that secures the processor fan to the system board.
6. Make a note of the routing of the fan cable and lift the processor fan off the system board.




|   |                     |   |              |
|---|---------------------|---|--------------|
| 1 | processor fan       | 2 | screw        |
| 3 | processor fan cable | 4 | system board |

---

## Replacing the Processor Fan

1. Follow the procedures in [Before You Begin](#).
2. Route the cable and place the processor fan on the system board.
3. Replace the screw that secures the processor fan to the system board.
4. Connect the processor fan cable to the system board connector.
5. Follow the instructions from [step 5](#) to [step 21](#) in [Replacing the System Board](#).
6. Replace the battery (see [Replacing the Battery](#)).

 **CAUTION:** Before turning on the computer, replace all screws and ensure that no stray screws remain inside the computer. Failure to do so may result in damage to the computer.

---

[Back to Contents Page](#)

## Hard Drive

### Dell™ Inspiron™ 1370 Service Manual

- [Removing the Hard Drive](#)
- [Replacing the Hard Drive](#)

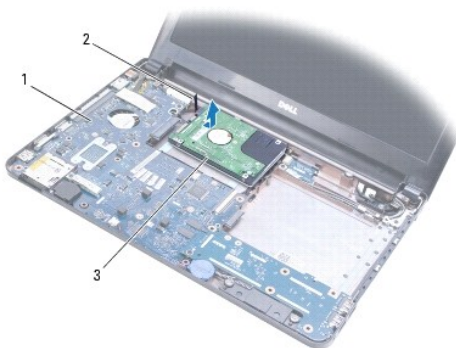
- WARNING:** Before working inside your computer, read the safety information that shipped with your computer. For additional safety best practices information, see the Regulatory Compliance Homepage at [www.dell.com/regulatory\\_compliance](http://www.dell.com/regulatory_compliance).
- WARNING:** If you remove the hard drive from the computer when the drive is hot, do not touch the metal housing of the hard drive.
- CAUTION:** Only a certified service technician should perform repairs on your computer. Damage due to servicing that is not authorized by Dell is not covered by your warranty.
- CAUTION:** To prevent data loss, turn off your computer (see [Turning Off Your Computer](#)) before removing the hard drive. Do not remove the hard drive while the computer is On or in Sleep state.
- CAUTION:** To help prevent damage to the system board, remove the main battery (see [Removing the Battery](#)) before working inside the computer.
- CAUTION:** Hard drives are extremely fragile. Exercise care when handling the hard drive.
- NOTE:** Dell does not guarantee compatibility or provide support for hard drives from sources other than Dell.
- NOTE:** If you are installing a hard drive from a source other than Dell, you need to install an operating system, drivers, and utilities on the new hard drive (see the *Dell Technology Guide*).
- 

## Removing the Hard Drive

1. Follow the procedures in [Before You Begin](#).
2. Remove the battery (see [Removing the Battery](#)).
3. Remove the keyboard (see [Removing the Keyboard](#)).
4. Turn the computer over and remove the Mini-Card cover (follow the instructions from [step 3](#) to [step 4](#) in [Removing the Mini-Card\(s\)](#)).
5. Remove the palm rest (see [Removing the Palm Rest](#)).
6. Pull the pull-tab to the right to disconnect the hard drive from the system board connector.

**CAUTION:** When the hard drive is not in the computer, store it in protective antistatic packaging (see "Protecting Against Electrostatic Discharge" in the safety instructions that shipped with your computer).

7. Lift the hard drive out of the computer base.




|   |              |   |          |
|---|--------------|---|----------|
| 1 | system board | 2 | pull-tab |
| 3 | hard drive   |   |          |

---



## Replacing the Hard Drive

1. Follow the procedures in [Before You Begin](#).
2. Remove the new hard drive from its packaging.  
Save the original packaging for storing or shipping the hard drive.
3. Place the hard drive in the computer base, then slide and connect the hard drive to the system board connector.
4. Replace the palm rest (see [Replacing the Palm Rest](#)).
5. Replace the Mini-Card cover (follow the instructions from [step 7](#) to [step 8](#) in [Replacing the Mini-Card\(s\)](#)).
6. Replace the keyboard (see [Replacing the Keyboard](#)).
7. Replace the battery (see [Replacing the Battery](#)).

 **CAUTION:** Before turning on the computer, replace all screws and ensure that no stray screws remain inside the computer. Failure to do so may result in damage to the computer.

8. Install the operating system for your computer, as needed. See "Restoring Your Operating System" in the *Setup Guide*.
9. Install the drivers and utilities for your computer, as needed. For more information, see the *Dell Technology Guide*.

---

[Back to Contents Page](#)

[Back to Contents Page](#)

## Keyboard

### Dell™ Inspiron™ 1370 Service Manual

- [Removing the Keyboard](#)
- [Replacing the Keyboard](#)

- WARNING:** Before working inside your computer, read the safety information that shipped with your computer. For additional safety best practices information, see the Regulatory Compliance Homepage at [www.dell.com/regulatory\\_compliance](http://www.dell.com/regulatory_compliance).
- CAUTION:** Only a certified service technician should perform repairs on your computer. Damage due to servicing that is not authorized by Dell™ is not covered by your warranty.
- CAUTION:** To avoid electrostatic discharge, ground yourself by using a wrist grounding strap or by periodically touching an unpainted metal surface.
- CAUTION:** To help prevent damage to the system board, remove the main battery (see [Removing the Battery](#)) before working inside the computer.
- 

## Removing the Keyboard

1. Follow the procedures in [Before You Begin](#).
2. Remove the battery (see [Removing the Battery](#)).
3. Remove the two screws that secure the keyboard to the computer base.



4. Turn the computer over and open the display as far as possible.

**CAUTION:** The keycaps on the keyboard are fragile, easily dislodged, and time-consuming to replace. Be careful when removing and handling the keyboard.

**CAUTION:** Be extremely careful when removing and handling the keyboard. Failure to do so could result in scratching the display panel.

5. Use a small flat-blade screwdriver to press in the release tabs on the palm rest.
6. Carefully lift the keyboard and slide the keyboard tabs out of the slots on the computer. Turn the keyboard over and place it on the palm rest.
7. Lift the connector latch and disconnect the keyboard cable from the system board connector.
8. Lift the keyboard off the palm rest.



|   |                              |   |                               |
|---|------------------------------|---|-------------------------------|
| 1 | small flat-blade screwdriver | 2 | release tabs on the palm rest |
| 3 | tabs on the keyboard (5)     | 4 | connector latch               |
| 5 | keyboard cable               |   |                               |

---

## Replacing the Keyboard

1. Follow the procedures in [Before You Begin](#).
2. Slide the keyboard cable into the connector on the system board. Press down on the connector latch to secure the keyboard cable to the system board connector.
3. Align the tabs on the keyboard with the slots on the palm rest and lower the keyboard into place.
4. Press down carefully along the back edge of the keyboard to secure it under the tabs on the palm rest.
5. Turn the computer over and replace the two screws that secure the keyboard to the computer base.
6. Replace the battery (see [Replacing the Battery](#)).

**CAUTION:** Before turning on the computer, replace all screws and ensure that no stray screws remain inside the computer. Failure to do so may result in damage to the computer.

---

[Back to Contents Page](#)

## Battery Latch Assemblies

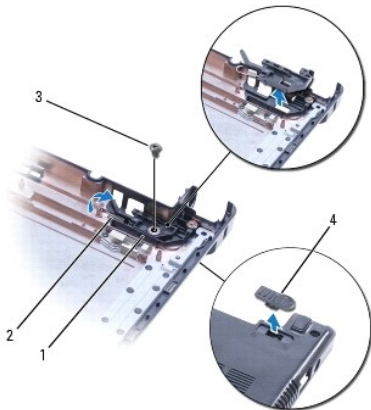
### Dell™ Inspiron™ 1370 Service Manual

- [Removing the Battery Release Latch Assembly](#)
- [Replacing the Battery Release Latch Assembly](#)
- [Removing the Battery Lock Latch Assembly](#)
- [Replacing the Battery Lock Latch Assembly](#)

- ⚠ WARNING:** Before working inside your computer, read the safety information that shipped with your computer. For additional safety best practices information, see the Regulatory Compliance Homepage at [www.dell.com/regulatory\\_compliance](http://www.dell.com/regulatory_compliance).
- ⚠ CAUTION:** Only a certified service technician should perform repairs on your computer. Damage due to servicing that is not authorized by Dell™ is not covered by your warranty.
- ⚠ CAUTION:** To avoid electrostatic discharge, ground yourself by using a wrist grounding strap or by periodically touching an unpainted metal surface (such as a connector on the back of the computer).
- ⚠ CAUTION:** To help prevent damage to the system board, remove the main battery (see [Removing the Battery](#)) before working inside the computer.
- 

## Removing the Battery Release Latch Assembly

1. Follow the procedures in [Before You Begin](#).
2. Remove the battery (see [Removing the Battery](#)).
3. Follow the instructions from [step 3](#) to [step 15](#) in [Removing the System Board](#).
4. Remove the display assembly (see [Removing the Display Assembly](#)).
5. Remove the screw that secures the battery release latch to the battery release latch assembly.
6. Remove the battery latch spring from the battery release latch assembly and the computer base.



|   |                                |   |                       |
|---|--------------------------------|---|-----------------------|
| 1 | battery release latch assembly | 2 | battery latch spring  |
| 3 | screw                          | 4 | battery release latch |

---

## Replacing the Battery Release Latch Assembly

1. Follow the procedures in [Before You Begin](#).
2. Hook the battery latch spring to the battery release latch assembly and then to the computer base.
3. Hold the battery release latch in place and replace the screw that secures the battery release latch to the battery release latch assembly.

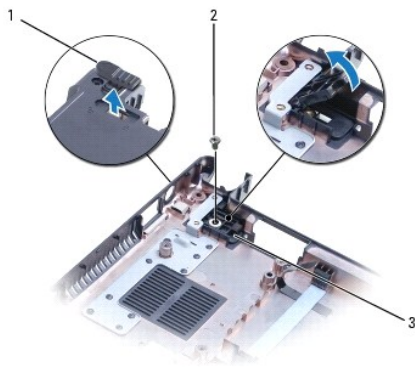
4. Replace the display assembly (see [Replacing the Display Assembly](#)).
5. Follow the instructions from [step 5](#) to [step 21](#) in [Replacing the System Board](#).
6. Replace the battery (see [Replacing the Battery](#)).

**CAUTION:** Before turning on the computer, replace all screws and ensure that no stray screws remain inside the computer. Failure to do so may result in damage to the computer.

---

## Removing the Battery Lock Latch Assembly

1. Follow the procedures in [Before You Begin](#).
2. Remove the battery (see [Removing the Battery](#)).
3. Follow the instructions from [step 3](#) to [step 15](#) in [Removing the System Board](#).
4. Remove the display assembly (see [Removing the Display Assembly](#)).
5. Remove the screw that secures the battery lock latch to the battery lock latch assembly.
6. Lift the battery lock latch from the computer base.



|   |                             |   |       |
|---|-----------------------------|---|-------|
| 1 | battery lock latch          | 2 | screw |
| 3 | battery lock latch assembly |   |       |

---

## Replacing the Battery Lock Latch Assembly

1. Follow the procedures in [Before You Begin](#).
2. Hold the battery lock latch in place and replace the screw that secures the battery lock latch to the battery lock latch assembly.
3. Replace the display assembly (see [Replacing the Display Assembly](#)).
4. Follow the instructions from [step 5](#) to [step 21](#) in [Replacing the System Board](#).
5. Replace the battery (see [Replacing the Battery](#)).

**CAUTION:** Before turning on the computer, replace all screws and ensure that no stray screws remain inside the computer. Failure to do so may result in damage to the computer.

---

[Back to Contents Page](#)

[Back to Contents Page](#)

## Memory Module(s)

Dell™ Inspiron™ 1370 Service Manual

- [Removing the Memory Module\(s\)](#)
- [Replacing the Memory Module\(s\)](#)

**WARNING:** Before working inside your computer, read the safety information that shipped with your computer. For additional safety best practices information, see the Regulatory Compliance Homepage at [www.dell.com/regulatory\\_compliance](http://www.dell.com/regulatory_compliance).

**CAUTION:** Only a certified service technician should perform repairs on your computer. Damage due to servicing that is not authorized by Dell™ is not covered by your warranty.

**CAUTION:** To avoid electrostatic discharge, ground yourself by using a wrist grounding strap or by periodically touching an unpainted metal surface (such as a connector on the back of the computer).

**CAUTION:** To help prevent damage to the system board, remove the main battery (see [Removing the Battery](#)) before working inside the computer.

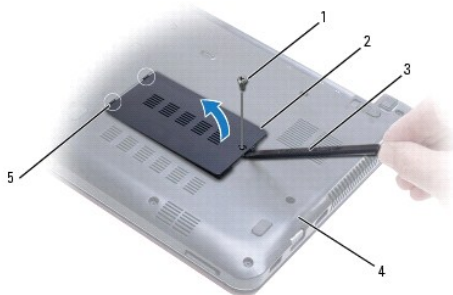
You can increase your computer memory by installing memory modules on the system board. See "Basic Specifications" in your *Setup Guide* and *Comprehensive Specifications* at [support.dell.com/manuals](http://support.dell.com/manuals) for information on the memory supported by your computer.

**NOTE:** Memory modules purchased from Dell™ are covered under your computer warranty.

Your computer has two user-accessible SODIMM sockets that you can access from the bottom of the computer.

## Removing the Memory Module(s)

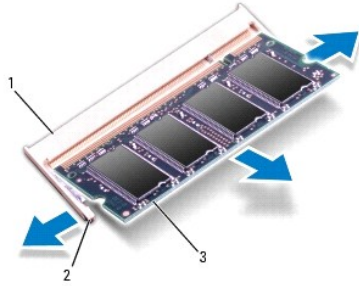
1. Follow the procedures in [Before You Begin](#).
2. Remove the battery (see [Removing the Battery](#)).
3. Remove the screw that secures the memory module cover to the computer base.
4. Use a plastic scribe to lift the memory module cover up at an angle and ease the tabs out of the computer base.



|   |                |   |                     |
|---|----------------|---|---------------------|
| 1 | screw          | 2 | memory module cover |
| 3 | plastic scribe | 4 | computer base       |
| 5 | tabs (2)       |   |                     |

**CAUTION:** To prevent damage to the memory module connector, do not use tools to spread the memory module securing clips.

5. Use your fingertips to carefully spread apart the securing clips on each end of the memory module connector until the module pops up.
6. Remove the memory module from the memory module connector.



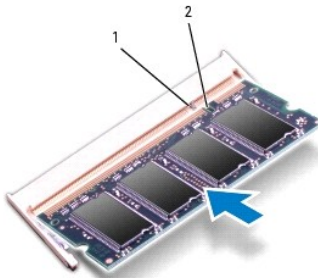
|   |                         |   |                    |
|---|-------------------------|---|--------------------|
| 1 | memory module connector | 2 | securing clips (2) |
| 3 | memory module           |   |                    |

## Replacing the Memory Module(s)

**CAUTION:** If you need to install memory modules in two connectors, install a memory module in the connector labeled "DIMM A" before you install a memory module in the connector labeled "DIMM B."

1. Follow the procedures in [Before You Begin](#).
2. Align the notch in the memory module with the tab in the memory module connector.
3. Slide the memory module firmly into the slot at a 45-degree angle, and press the memory module down until it clicks into place. If you do not hear the click, remove the memory module and reinstall it.

**NOTE:** If the memory module is not installed properly, the computer may not boot.




|   |     |   |       |
|---|-----|---|-------|
| 1 | tab | 2 | notch |
|---|-----|---|-------|

4. Align the tabs on the memory module cover with the slots on the computer base and snap the cover into place.
5. Replace the screw that secures the memory module cover to the computer base.
6. Replace the battery (see [Replacing the Battery](#)). Connect the AC adapter to your computer and an electrical outlet.
7. Turn on the computer.

As the computer boots, it detects the memory module and automatically updates the system configuration information.

To confirm the amount of memory installed in the computer, click

Start  → Control Panel → System and Security → System.

**CAUTION:** Before turning on the computer, replace all screws and ensure that no stray screws remain inside the computer. Failure to do so may result in damage to the computer.

[Back to Contents Page](#)





## Wireless Mini-Card(s)

### Dell™ Inspiron™ 1370 Service Manual

- [Removing the Mini-Card\(s\)](#)
- [Replacing the Mini-Card\(s\)](#)

- WARNING:** Before working inside your computer, read the safety information that shipped with your computer. For additional safety best practices information, see the Regulatory Compliance Homepage at [www.dell.com/regulatory\\_compliance](http://www.dell.com/regulatory_compliance).
- CAUTION:** Only a certified service technician should perform repairs on your computer. Damage due to servicing that is not authorized by Dell™ is not covered by your warranty.
- CAUTION:** To avoid electrostatic discharge, ground yourself by using a wrist grounding strap or by periodically touching an unpainted metal surface.
- CAUTION:** To help prevent damage to the system board, remove the main battery (see [Removing the Battery](#)) before working inside the computer.
- CAUTION:** When the Mini-Card is not in the computer, store it in protective antistatic packaging (see "Protecting Against Electrostatic Discharge" in the safety instructions that shipped with your computer).
- NOTE:** Dell does not guarantee compatibility or provide support for Mini-Cards from sources other than Dell.
- NOTE:** Depending on the configuration of the computer when it was sold, the Mini-Card slot may or may not have a Mini-Card installed in the slot.

If you ordered a wireless Mini-Card with your computer, the card is already installed.

Your computer supports two Mini-Card slots:

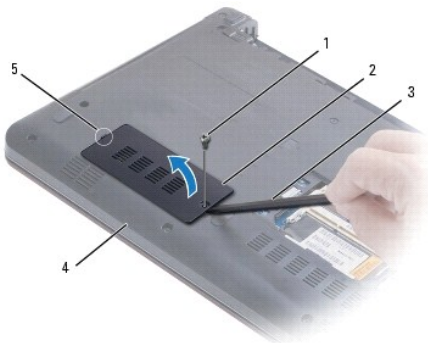
- 1 One full Mini-Card slot – Wireless Wide Area Network (WWAN)
- 1 One half Mini-Card slot – Wireless Local Area Network (WLAN)

---

## Removing the Mini-Card(s)

- NOTE:** If your computer includes both the WWAN and WLAN cards, remove the WWAN card before removing the WLAN card.

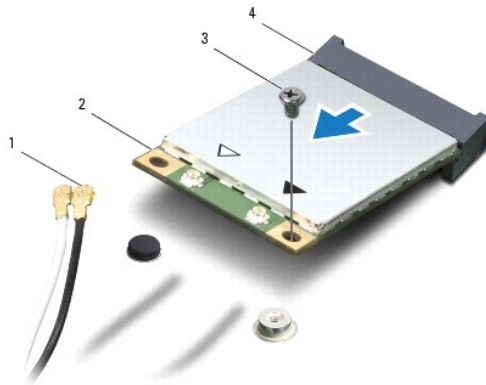
1. Follow the procedures in [Before You Begin](#).
2. Remove the battery (see [Removing the Battery](#)).
3. Remove the screw that secures the Mini-Card cover to the computer base.
4. Using a plastic scribe, lift the Mini-Card cover at an angle and ease the tab out of the computer base.



|   |                |   |                 |
|---|----------------|---|-----------------|
| 1 | screw          | 2 | Mini-Card cover |
| 3 | plastic scribe | 4 | computer base   |
| 5 | tab            |   |                 |

5. Disconnect the antenna cables from the Mini-Card.

6. Remove the screw that secures the Mini-Card to the system board.
7. Lift the Mini-Card out of the system board connector.



|   |                    |   |                        |
|---|--------------------|---|------------------------|
| 1 | antenna cables (2) | 2 | Mini-Card              |
| 3 | screw              | 4 | system board connector |

## Replacing the Mini-Card(s)

**NOTE:** If your computer includes both the WWAN and WLAN cards, replace the WLAN card before replacing the WWAN card.

1. Follow the procedures in [Before You Begin](#).
2. Remove the new Mini-Card from its packaging.

**CAUTION:** Use firm and even pressure to slide the card into place. If you use excessive force, you may damage the connector.


**CAUTION:** The connectors are keyed to ensure correct insertion. If you feel resistance, check the connectors on the card and on the system board, and realign the card.

**CAUTION:** To avoid damage to the Mini-Card, never place cables under the card.


3. With the label on the Mini-Card facing up, insert it at a 45-degree angle into the appropriate system board connector.
4. Press the other end of the Mini-Card down into the slot on the system board and replace the screw that secures the Mini-Card to the system board.
5. Connect the appropriate antenna cables to the Mini-Card. The following table provides the antenna cable color scheme for the Mini-Card(s) supported by your computer.

| Connectors on the Mini-Card     | Colors of antenna cables |
|---------------------------------|--------------------------|
| main WLAN (white triangle)      | white                    |
| auxiliary WLAN (black triangle) | black                    |
| main WWAN (white triangle)      | white with gray stripe   |
| auxiliary WWAN (black triangle) | black with gray stripe   |

6. Secure unused antenna cables in the protective mylar sleeve.
7. Align the tab on the Mini-Card cover with the slot on the computer base and snap the cover into place.
8. Replace the screw that secures the Mini-Card cover to the computer base.
9. Replace the battery (see [Replacing the Battery](#)).

 **CAUTION:** Before turning on the computer, replace all screws and ensure that no stray screws remain inside the computer. Failure to do so may result in damage to the computer.

10. Install the drivers and utilities for your computer, as required. For more information, see the *Dell Technology Guide*.

 **NOTE:** If you are installing a communication card from a source other than Dell, you must install the appropriate drivers and utilities. For more generic driver information, see the *Dell Technology Guide*.

---

[Back to Contents Page](#)

## Optical Drive

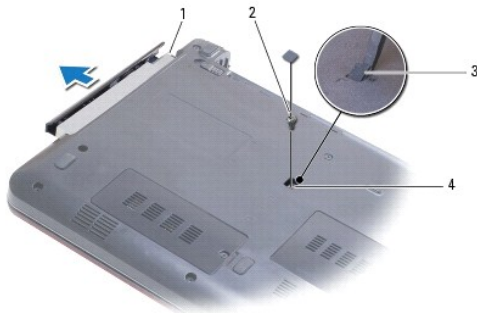
### Dell™ Inspiron™ 1370 Service Manual

- [Removing the Optical Drive](#)
- [Replacing the Optical Drive](#)

- WARNING:** Before working inside your computer, read the safety information that shipped with your computer. For additional safety best practices information, see the Regulatory Compliance Homepage at [www.dell.com/regulatory\\_compliance](http://www.dell.com/regulatory_compliance).
- CAUTION:** Only a certified service technician should perform repairs on your computer. Damage due to servicing that is not authorized by Dell™ is not covered by your warranty.
- CAUTION:** To avoid electrostatic discharge, ground yourself by using a wrist grounding strap or by periodically touching an unpainted metal surface (such as the back panel) on the computer.
- CAUTION:** To help prevent damage to the system board, remove the main battery (see [Removing the Battery](#)) before working inside the computer.
- 

## Removing the Optical Drive

1. Follow the procedures in [Before You Begin](#).
2. Remove the battery (see [Removing the Battery](#)).
3. Using a plastic scribe, carefully pry up the rubber pad that covers the screw that secures the optical drive to the computer base.
4. Remove the screw that secures the optical drive to the computer base.
5. Insert a plastic scribe into the slot on the computer and push the metal bracket on the optical drive out.
6. Slide the optical drive out of the optical drive bay.




|   |               |   |                  |
|---|---------------|---|------------------|
| 1 | optical drive | 2 | screw            |
| 3 | rubber pad    | 4 | slot in computer |

---

## Replacing the Optical Drive

1. Follow the procedures in [Before You Begin](#).
2. Slide the optical drive into the optical drive bay until it is fully seated.
3. Replace the screw that secures the optical drive to the computer base.
4. Replace the rubber pad that covers the screw.
5. Replace the battery (see [Replacing the Battery](#)).

 **CAUTION:** Before turning on the computer, replace all screws and ensure that no stray screws remain inside the computer. Failure to do so may result in damage to the computer.

---

[Back to Contents Page](#)

[Back to Contents Page](#)

## Palm Rest

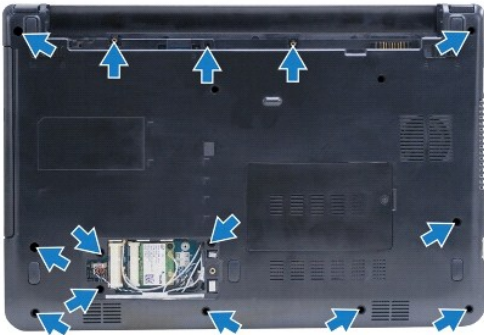
### Dell™ Inspiron™ 1370 Service Manual

- [Removing the Palm Rest](#)
- [Replacing the Palm Rest](#)

- WARNING:** Before working inside your computer, read the safety information that shipped with your computer. For additional safety best practices information, see the Regulatory Compliance Homepage at [www.dell.com/regulatory\\_compliance](http://www.dell.com/regulatory_compliance).
- CAUTION:** To avoid electrostatic discharge, ground yourself by using a wrist grounding strap or by periodically touching an unpainted metal surface.
- CAUTION:** Only a certified service technician should perform repairs on your computer. Damage due to servicing that is not authorized by Dell™ is not covered by your warranty.
- CAUTION:** To help prevent damage to the system board, remove the main battery (see [Removing the Battery](#)) before working inside the computer.
- 

## Removing the Palm Rest

1. Follow the procedures in [Before You Begin](#).
2. Remove the battery (see [Removing the Battery](#)).
3. Remove the keyboard (see [Removing the Keyboard](#)).
4. Turn the computer over and remove the Mini-Card cover (follow the instructions from [step 3](#) to [step 4](#) in [Removing the Mini-Card\(s\)](#)).
5. Remove the fourteen screws that secure the palm rest to the computer base.



6. Turn the computer over and open the display as far as possible.
7. Remove the four screws that secure the palm rest to the computer base.

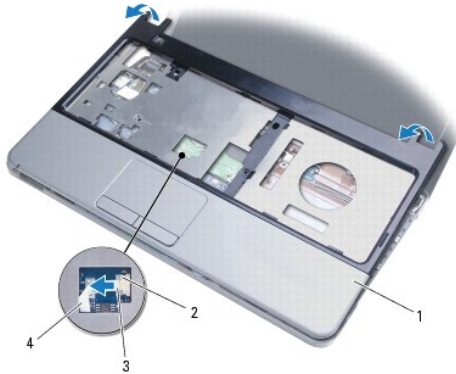


8. Lift the connector latch and pull the pull-tab to disconnect the touch pad cable from the system board connector.

**CAUTION:** Carefully separate the palm rest from the computer base to avoid damage to the palm rest.

9. Starting with the right side of the palm rest, carefully pull up to disengage the tabs on the palm rest from the computer base.

10. Lift the palm rest off the computer base.



|   |           |   |                 |
|---|-----------|---|-----------------|
| 1 | palm rest | 2 | connector latch |
| 3 | pull-tab  | 4 | touch pad cable |

---

## Replacing the Palm Rest

1. Follow the procedures in [Before You Begin](#).
2. Align the palm rest on the computer base and gently snap the palm rest into place.
3. Slide the touch pad cable into the system board connector. Press down on the connector latch to secure the cable.
4. Replace the four screws that secure the palm rest to the computer base.
5. Turn the computer over and replace the fourteen screws that secure the palm rest to the computer base.
6. Replace the Mini-Card cover (follow the instructions from [step 7](#) to [step 8](#) in [Replacing the Mini-Card\(s\)](#)).
7. Replace the keyboard (see [Replacing the Keyboard](#)).
8. Replace the battery (see [Replacing the Battery](#)).

**CAUTION:** Before turning on the computer, replace all screws and ensure that no stray screws remain inside the computer. Failure to do so may result in damage to the computer.

---

[Back to Contents Page](#)

## Power Board

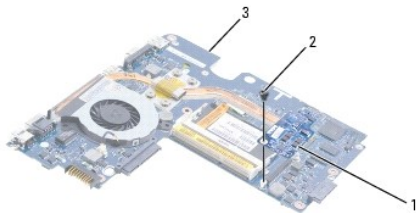
### Dell™ Inspiron™ 1370 Service Manual

- [Removing the Power Board](#)
- [Replacing the Power Board](#)

- ⚠ WARNING:** Before working inside your computer, read the safety information that shipped with your computer. For additional safety best practices information, see the Regulatory Compliance Homepage at [www.dell.com/regulatory\\_compliance](http://www.dell.com/regulatory_compliance).
- ⚠ CAUTION:** Only a certified service technician should perform repairs on your computer. Damage due to servicing that is not authorized by Dell™ is not covered by your warranty.
- ⚠ CAUTION:** To avoid electrostatic discharge, ground yourself by using a wrist grounding strap or by periodically touching an unpainted metal surface.
- ⚠ CAUTION:** To help prevent damage to the system board, remove the main battery (see [Removing the Battery](#)) before working inside the computer.
- 

## Removing the Power Board

1. Follow the procedures in [Before You Begin](#).
2. Remove the battery (see [Removing the Battery](#)).
3. Follow the instructions from [step 3](#) to [step 15](#) in [Removing the System Board](#).
4. Remove the screw that secures the power board to the system board.
5. Lift the power board to disconnect it from the connector on the system board.



|   |              |   |       |
|---|--------------|---|-------|
| 1 | power board  | 2 | screw |
| 3 | system board |   |       |

---

## Replacing the Power Board

1. Follow the procedures in [Before You Begin](#).
2. Align the connector on the power board with the connector on the system board, and press down to connect the power board to the connector on the system board.
3. Replace the screw that secures the power board to the system board.
4. Follow the instructions from [step 5](#) to [step 21](#) in [Replacing the System Board](#).
5. Replace the battery (see [Replacing the Battery](#)).

- ⚠ CAUTION:** Before turning on the computer, replace all screws and ensure that no stray screws remain inside the computer. Failure to do so may result in damage to the computer.
-





## SIM Board

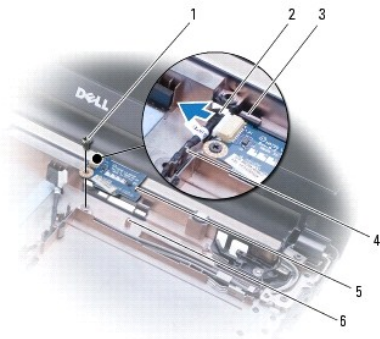
### Dell™ Inspiron™ 1370 Service Manual

- [Removing the SIM Board](#)
- [Replacing the SIM Board](#)

- WARNING:** Before working inside your computer, read the safety information that shipped with your computer. For additional safety best practices information, see the Regulatory Compliance Homepage at [www.dell.com/regulatory\\_compliance](http://www.dell.com/regulatory_compliance).
- CAUTION:** Only a certified service technician should perform repairs on your computer. Damage due to servicing that is not authorized by Dell™ is not covered by your warranty.
- CAUTION:** To avoid electrostatic discharge, ground yourself by using a wrist grounding strap or by periodically touching an unpainted metal surface.
- CAUTION:** To help prevent damage to the system board, remove the main battery (see [Removing the Battery](#)) before working inside the computer.
- 

## Removing the SIM Board

1. Follow the procedures in [Before You Begin](#).
2. Remove the battery (see [Removing the Battery](#)).
3. Follow the instructions from [step 3](#) to [step 15](#) in [Removing the System Board](#).
4. Disconnect the SIM board cable from the SIM board connector.
5. Remove the screw that secures the SIM board to the computer base.
6. Slide the SIM board out of the slots in the computer base.
7. Note the cable routing and remove the SIM board cable from the computer base.




|   |                            |   |                      |
|---|----------------------------|---|----------------------|
| 1 | screw                      | 2 | SIM board cable      |
| 3 | slots in the computer base | 4 | cable routing guides |
| 5 | SIM board                  | 6 | alignment post       |

---

## Replacing the SIM Board

1. Follow the procedures in [Before You Begin](#).
2. Connect the SIM board cable to the SIM board connector.
3. Using the slots and the alignment posts on the computer base, replace the SIM board on the computer base.
4. Replace the screw that secures the SIM board to the computer base.

5. Using the cable routing guides, route the SIM board cable.
6. Follow the instructions from [step 5](#) to [step 21](#) in [Replacing the System Board](#).
7. Replace the battery (see [Replacing the Battery](#)).

 **CAUTION:** Before turning on the computer, replace all screws and ensure that no stray screws remain inside the computer. Failure to do so may result in damage to the computer.

---

[Back to Contents Page](#)

## Speakers

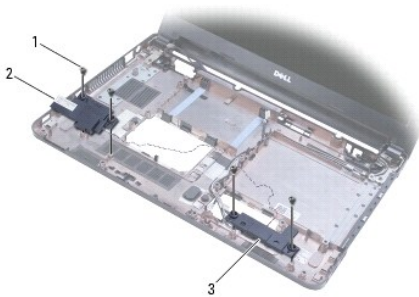
### Dell™ Inspiron™ 1370 Service Manual

- [Removing the Speakers](#)
- [Replacing the Speakers](#)

- WARNING:** Before working inside your computer, read the safety information that shipped with your computer. For additional safety best practices information, see the Regulatory Compliance Homepage at [www.dell.com/regulatory\\_compliance](http://www.dell.com/regulatory_compliance).
- CAUTION:** Only a certified service technician should perform repairs on your computer. Damage due to servicing that is not authorized by Dell™ is not covered by your warranty.
- CAUTION:** To avoid electrostatic discharge, ground yourself by using a wrist grounding strap or by periodically touching an unpainted metal surface.
- CAUTION:** To help prevent damage to the system board, remove the main battery (see [Removing the Battery](#)) before working inside the computer.
- 

## Removing the Speakers

1. Follow the procedures in [Before You Begin](#).
2. Remove the battery (see [Removing the Battery](#)).
3. Follow the instructions from [step 3](#) to [step 15](#) in [Removing the System Board](#).
4. Remove the two screws from the left speaker and the two screws from the right speaker.
5. Make a note of the routing for the speaker cables and remove the two speakers from the computer base.




|   |               |   |              |
|---|---------------|---|--------------|
| 1 | screws (4)    | 2 | left speaker |
| 3 | right speaker |   |              |

---

## Replacing the Speakers

1. Follow the procedures in [Before You Begin](#).
2. Place the speakers in the computer base.
3. Route the speaker cables in their routing guides in the computer base.
4. Replace the two screws on the right speaker and the two screws on the left speaker.
5. Follow the instructions from [step 5](#) to [step 21](#) in [Replacing the System Board](#).
6. Replace the battery (see [Replacing the Battery](#)).

 **CAUTION:** Before turning on the computer, replace all screws and ensure that no stray screws remain inside the computer. Failure to do so may result in damage to the computer.

---

[Back to Contents Page](#)

## System Board

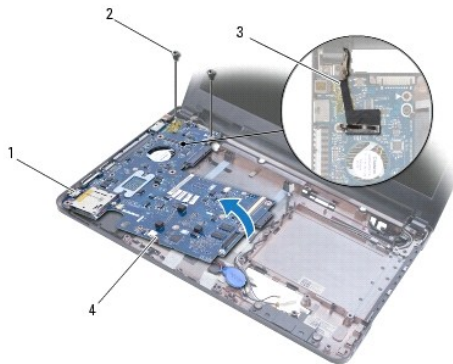
### Dell™ Inspiron™ 1370 Service Manual

- [Removing the System Board](#)
- [Replacing the System Board](#)
- [Entering the Service Tag in the BIOS](#)

- WARNING:** Before working inside your computer, read the safety information that shipped with your computer. For additional safety best practices information, see the Regulatory Compliance Homepage at [www.dell.com/regulatory\\_compliance](http://www.dell.com/regulatory_compliance).
- CAUTION:** Only a certified service technician should perform repairs on your computer. Damage due to servicing that is not authorized by Dell™ is not covered by your warranty.
- CAUTION:** To avoid electrostatic discharge, ground yourself by using a wrist grounding strap or by periodically touching an unpainted metal surface.
- CAUTION:** To help prevent damage to the system board, remove the main battery (see [Removing the Battery](#)) before working inside the computer.
- 

## Removing the System Board

1. Follow the procedures in [Before You Begin](#).
2. Remove the battery (see [Removing the Battery](#)).
3. Remove the optical drive (see [Removing the Optical Drive](#)).
4. Remove the memory module (see [Removing the Memory Module\(s\)](#)).
5. Remove the Mini-Card(s) (see [Removing the Mini-Card\(s\)](#)).
6. Remove the keyboard (see [Removing the Keyboard](#)).
7. Remove the palm rest (see [Removing the Palm Rest](#)).
8. Remove the Bluetooth card (see [Removing the Bluetooth Card](#)).
9. Remove the hard drive (see [Removing the Hard Drive](#)).
10. Remove the USB/audio board (see [Removing the USB/Audio Board](#)).
11. Pull the pull-tab to disconnect the display cable from the system board connector.
12. Disconnect the coin-cell battery cable from the system board connector.
13. Remove the two screws that secure the system board to the computer base.
14. Lift the right side of the system board at an angle and carefully ease the I/O connectors out of the computer base.




|   |                |   |                         |
|---|----------------|---|-------------------------|
| 1 | I/O connectors | 2 | screws (2)              |
| 3 | display cable  | 4 | coin-cell battery cable |

15. Lift the system board out of the computer base and turn the system board over.
  16. Remove the power board (see [Removing the Power Board](#)).
  17. Remove the processor fan (see [Removing the Processor Fan](#)).
  18. Remove the thermal cooling assembly (see [Removing the Thermal Cooling Assembly](#)).
- 

## Replacing the System Board

1. Follow the procedures in [Before You Begin](#).
2. Replace the thermal cooling assembly (see [Replacing the Thermal Cooling Assembly](#)).
3. Replace the processor fan (see [Replacing the Processor Fan](#)).
4. Replace the power board (see [Replacing the Power Board](#)).
5. Turn the system board over.
6. Align the I/O connectors with the slots on the computer base, then use the alignment posts on the computer base to correctly place the system board. Ensure that the display cable is above the system board, and that the coin-cell battery cable routes underneath the system board.
7. Connect the display cable to the system board connector.
8. Connect the coin-cell battery cable to the system board connector.
9. With the adhesive side of the coin-cell battery facing down, press the coin-cell battery into place on the computer base.
10. Replace the two screws that secure the system board to the computer base.
11. Replace the USB/audio board (see [Replacing the USB/Audio Board](#)).
12. Replace the hard drive (see [Replacing the Hard Drive](#)).
13. Replace the Bluetooth card (see [Replacing the Bluetooth Card](#)).
14. Replace the palm rest (see [Replacing the Palm Rest](#)).
15. Replace the keyboard (see [Replacing the Keyboard](#)).
16. Replace the Mini-Card(s) (see [Replacing the Mini-Card\(s\)](#)).
17. Replace the memory module (see [Replacing the Memory Module\(s\)](#)).
18. Replace the optical drive (see [Replacing the Optical Drive](#)).
19. Replace the battery (see [Replacing the Battery](#)).

 **CAUTION:** Before turning on the computer, replace all screws and ensure that no stray screws remain inside the computer. Failure to do so may result in damage to the computer.

20. Turn on the computer.

 **NOTE:** After you have replaced the system board, enter the computer's Service Tag into the BIOS of the replacement system board.

21. Enter the service tag (see [Entering the Service Tag in the BIOS](#)).
-

## Entering the Service Tag in the BIOS

1. Ensure that the AC adapter is plugged in and that the main battery is installed properly.
  2. Turn on the computer.
  3. Press <F2> during POST to enter the system setup program.
  4. Navigate to the security tab and enter the service tag in the **Set Service Tag** field.
- 

[Back to Contents Page](#)



[Back to Contents Page](#)

## Dell™ Inspiron™ 1370 Service Manual



**NOTE:** A NOTE indicates important information that helps you make better use of your computer.



**CAUTION:** A CAUTION indicates either potential damage to hardware or loss of data and tells you how to avoid the problem.



**WARNING:** A WARNING indicates a potential for property damage, personal injury, or death.

---

---

---

---

Information in this document is subject to change without notice.  
© 2009 Dell Inc. All rights reserved.

Reproduction of these materials in any manner whatsoever without the written permission of Dell Inc. is strictly forbidden.

Trademarks used in this text: *Dell*, the *DELL* logo, and *Inspiron* are trademarks of Dell Inc.; *Bluetooth* is a registered trademark owned by Bluetooth SIG, Inc. and is used by Dell under license; *Microsoft*, *Windows*, and the *Windows* start button logo are either trademarks or registered trademarks of Microsoft Corporation in the United States and/or other countries.

Other trademarks and trade names may be used in this document to refer to either the entities claiming the marks and names or their products. Dell Inc. disclaims any proprietary interest in trademarks and trade names other than its own.

November 2009 Rev. A00

---

[Back to Contents Page](#)

## USB/Audio Board

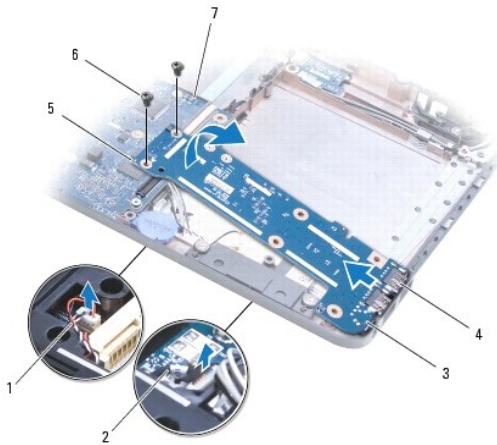
### Dell™ Inspiron™ 1370 Service Manual

- [Removing the USB/Audio Board](#)
- [Replacing the USB/Audio Board](#)

- ⚠ WARNING:** Before working inside your computer, read the safety information that shipped with your computer. For additional safety best practices information, see the Regulatory Compliance Homepage at [www.dell.com/regulatory\\_compliance](http://www.dell.com/regulatory_compliance).
- ⚠ CAUTION:** Only a certified service technician should perform repairs on your computer. Damage due to servicing that is not authorized by Dell™ is not covered by your warranty.
- ⚠ CAUTION:** To avoid electrostatic discharge, ground yourself by using a wrist grounding strap or by periodically touching an unpainted metal surface.
- ⚠ CAUTION:** To help prevent damage to the system board, remove the main battery (see [Removing the Battery](#)) before working inside the computer.
- 

## Removing the USB/Audio Board

1. Follow the procedures in [Before You Begin](#).
2. Remove the battery (see [Removing the Battery](#)).
3. Remove the Mini-Card(s) (see [Removing the Mini-Card\(s\)](#)).
4. In the Mini-Card slot, disconnect the speaker cable and the SIM board cable from the connectors on the USB/audio board.
5. Remove the keyboard (see [Removing the Keyboard](#)).
6. Remove the palm rest (see [Removing the Palm Rest](#)).
7. Remove the two screws that secure the USB/audio board to the computer base.
8. Lift the left side of the USB/audio board to disconnect it from the system board, then ease the USB and audio connectors out of the computer base.




|   |                                  |   |                              |
|---|----------------------------------|---|------------------------------|
| 1 | speaker cable                    | 2 | SIM board cable              |
| 3 | USB/audio board                  | 4 | USB and audio connectors (3) |
| 5 | left side of the USB/audio board | 6 | screws (2)                   |
| 7 | system board                     |   |                              |

---

## Replacing the USB/Audio Board

1. Follow the procedures in [Before You Begin](#).
2. Align the USB and audio connectors on the USB/audio board with the slots on the computer base.
3. Press the USB/audio board to connect it to the system board connector.
4. Replace the two screws that secure the USB/audio board to the computer base.
5. Replace the palm rest (see [Replacing the Palm Rest](#)).
6. Replace the keyboard (see [Replacing the Keyboard](#)).
7. Turn the computer over and connect the speaker cable and the SIM board cable to the connectors on the USB/audio board.
8. Replace the Mini-Card(s) (see [Replacing the Mini-Card\(s\)](#)).
9. Replace the battery (see [Replacing the Battery](#)).

 **CAUTION:** Before turning on the computer, replace all screws and ensure that no stray screws remain inside the computer. Failure to do so may result in damage to the computer.

---

[Back to Contents Page](#)